

systema



**WALKWAY X-41PASS**

systema



systema

## Use:

The X-41 Walkway has been designed to enable moving on fragile and slippery roofs in complete safety.

## Technical Features:

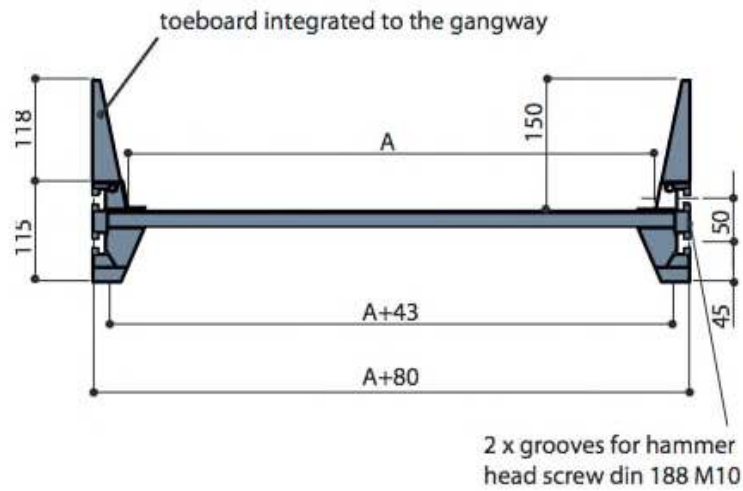
- Length: 3m
- Material: Aluminium 6063 T6.
- Centre distance of fixation: 3 m max.
- Fabrication compliant with the European standard EN 14122-2.
- Walkway can be used with an inclination angle from 0° to 20°.
- Walkway is available with or without toeboard.
- Model available with width of 600 or 800 mm.
- Safety gate optional.
- Parapet guardrail opcional.
- Fixation on metal deck, asbestos cement, standing seam roof or any type of support upon request.

## Advantages:

- Multipurpose
- The fixation the gangway and guardrails is simple thanks to the grooves
- Easy to install
- Can be used with guardrails on one side or both side



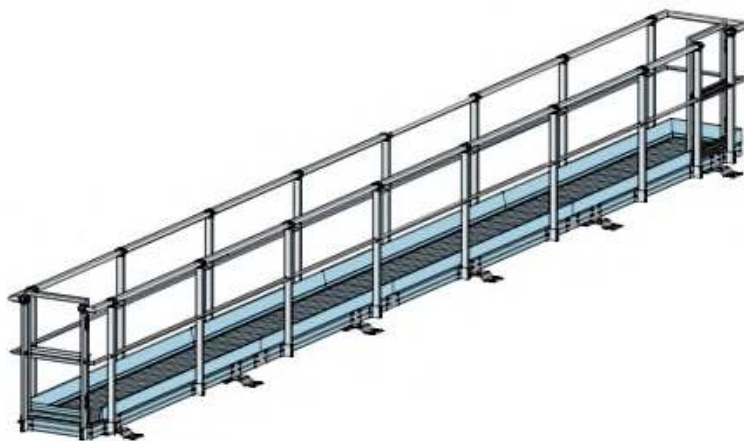
systema



## Models:

Size	Weight	References
600mm	14 kg/ml	X-41PASS3-600
800mm	16 kg/ml	X-41PASS3-800

## Example of assembly:



## Walkway components

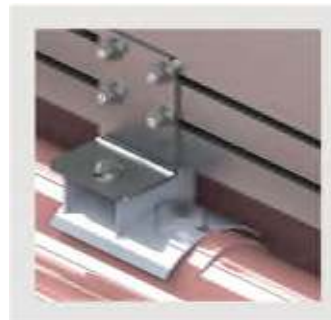
Fixation on metal deck, bracket, self-drilling screw and sealing joint

Ref.: X-41PASS3-f01



Fixation asbestos cement

Ref.: X-41PASS3-f02



Fixation standing seam and fastenings

Ref.: X-41PASS3-f03



systema

Junction plate and fastenings

Ref.: X-41PASS3-f04



Fixation standard bracket

Ref.: X-41PASS3-f05



Angle kit 600 mm

Ref.: X-41PASS3-E600

Angle kit 800 mm

Ref.: X-41PASS3-E800



Guardrails on both sides length  
3000 mm for straight walkway

Ref.: X-41PASS3-BAR



systema



systema

## systema safety®

Pza. Alcalde Agatángelo Soler 5, of 1  
03015 ALICANTE  
ESPAÑA

Tel.: + 34 965 24 86 50

Tel.: +34 678 58 63 98

Fax: +34 965 25 15 89

[www.systemasafety.com](http://www.systemasafety.com)

Email: [sales@systemasafety.com](mailto:sales@systemasafety.com)



systema