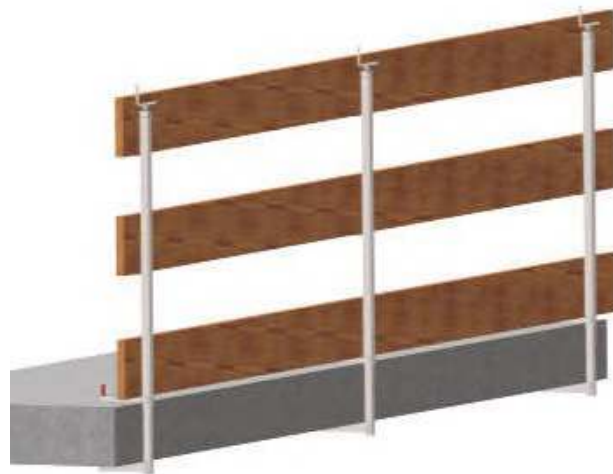


FLEX B- 2711E

Edge Protection Guardrail Post with Clamp.

This standard guardrail post with clamp, regulated by inner threaded rod, is suitable for securing flat or inclined surfaces (up to 10°).

Certified in accordance to EN 13374:2013 class A.



DETAILS

REF.	B-2711E
FIXING	CLAMP
USEFUL HEIGHT	100 cm
CLAMP OPENING	80/45cm
WEIGHT	5kg
STANDARD	EN 13374:2013 A
MAX. SPACING	180 cm
FINISHING	Hot-dip or cold galvanized